

**Greenbrook® Urinal**

- Highly aesthetic vitreous china urinal with large footprint
- Urinal has optimized surface contours and water flushing spreader that rinses inverted back wall for superior splash protection
- High Efficiency Urinal (HEU) operates in the range of 0.125 gpf to 0.5 gpf (0.47 Lpf to 1.9 Lpf)
- 3/4" (19 mm) inlet spud with 2" (51 mm) outlet spud
- Permanent EverClean® surface inhibits the growth of stain and odor causing bacteria
- Includes removable strainer and two wall hangers

- 6516001EC** Greenbrook top spud
- 6517001EC** Greenbrook back spud

**Nominal Dimensions:**

15" x 16-1/8" x 27-1/2"  
(380 x 411 x 698mm)

Recommended working pressure – between 20 psi at valve when flushing and 80 psi static

**Compliance Certifications -**

**Meets or Exceeds the Following Specifications:**

- ASME A112.19.2/CSA B45.1 for Vitreous China Fixtures



**6516001EC Top Spud**



**6517001EC Back Spud**

**To Be Specified:**

- Color:  White
- Flush Valve:

- 0.5 gpf Flush Valve: Sensor-Operated:
  - American Standard Selectronic® #6063051.002 DC Power (Top Spud)
  - American Standard Selectronic® #606B305.007 AC Power (Back Spud)

- 0.5 gpf Flush Valve: Manual-Operated:
  - American Standard #6045051.002

- 0.125 gpf Flush Valve: Sensor-Operated:
  - American Standard Selectronic® #6063013.002 DC Power (Top Spud)
  - American Standard Selectronic® #606B301.007 AC Power (Back Spud)

- 0.125 gpf Flush Valve: Manual-Operated:
  - American Standard #6045013.002

SEE REVERSE FOR ROUGHING-IN DIMENSIONS



MEETS THE AMERICANS WITH DISABILITIES ACT GUIDELINES AND ANSI A117.1 ACCESSIBLE AND USABLE BUILDINGS AND FACILITIES - CHECK LOCAL CODES.

• When installed so top of rim is 432mm (17") MAXIMUM from finished floor.



EVERCLEAN®



WHEN USED WITH 0.125 gpf urinal flush valve

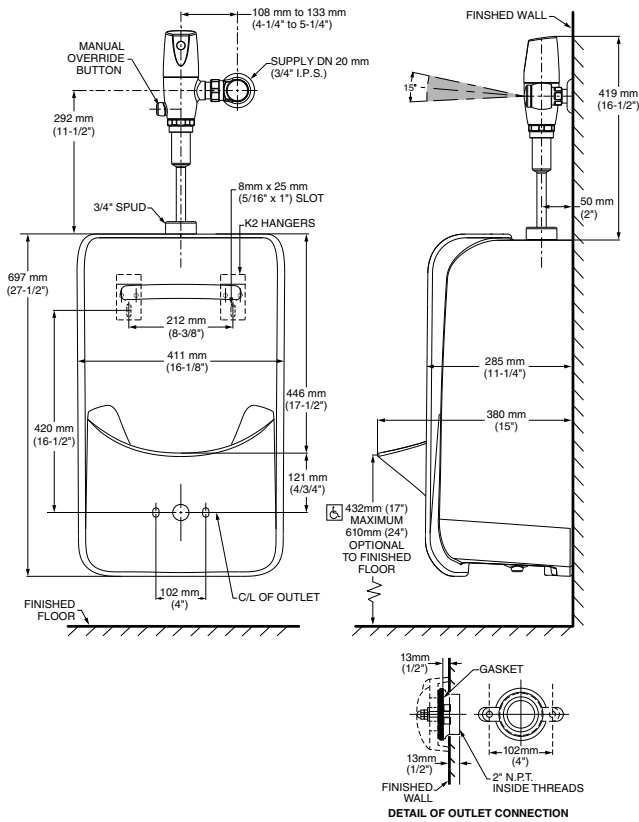


WHEN USED WITH 0.125 gpf or 0.5 gpf urinal flush valves

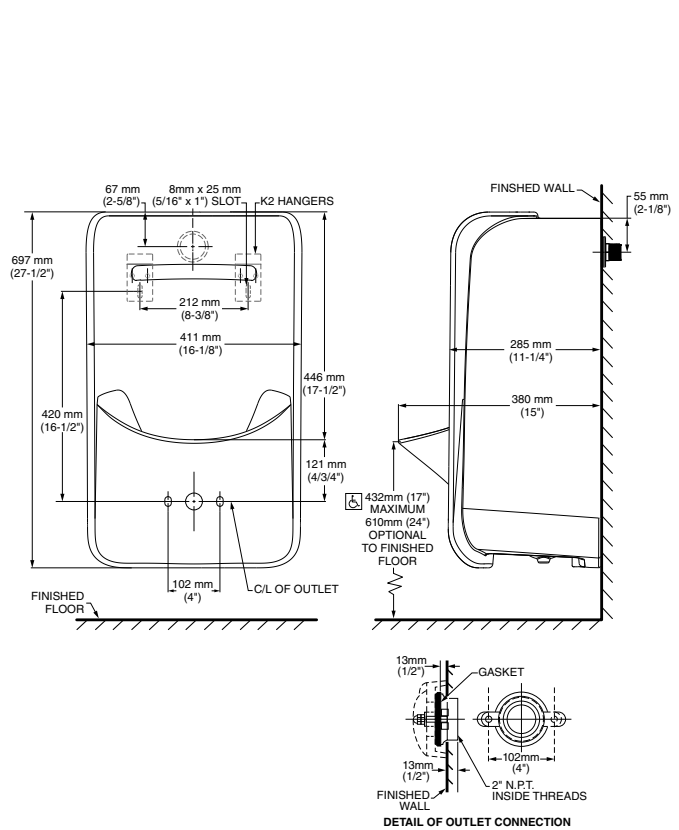


ADA COMPLIANT

6516001EC TOP SPUD



6517001EC BACK SPUD



**MEETS THE AMERICANS WITH DISABILITIES ACT GUIDELINES AND ANSI A117.1 ACCESSIBLE AND USABLE BUILDINGS AND FACILITIES - CHECK LOCAL CODES.**

- When installed so top of rim is 432mm (17") MAXIMUM from finished floor.

**NOTES:**  
 FLUSH VALVE NOT INCLUDED AND MUST BE ORDERED SEPARATELY.  
 PROVIDE SUITABLE REINFORCEMENT FOR ALL WALL SUPPORTS.

**IMPORTANT:** Dimensions of fixtures are nominal and may vary within the range of tolerances established by ANSI Standard A112.19.2. These measurements are subject to change or cancellation. No responsibility is assumed for use of superseded or voided pages.